

ROTA 罗塔®



罗塔专业滚塑定制加工
ROTA Rotational Molding Value-Added Processing

罗塔滚塑科技 重视您的理念 创造卓越产品
ROTA Rotomold Plasticech We Take Your Ideas & Bring Them To Life

烟台罗塔塑料科技有限公司
Yantai Rota Plastic Technology Co., Ltd.

电话/tel: 86-0535-6750559 手机/mob: 86-133-5694-2661
网址/web: www.chinarota.com 邮箱/E-mail: rota6750559@163.com
地址/add: 山东省烟台市高新区纬四路21号
Address /add: No. 21, Weisi Road, High-tech Zone, Yantai City, Shandong Province



企业简介

COMPANY PROFILE

罗塔ROTA是专业从事户外休闲保温箱、冷链物流箱、滚塑模具以及滚塑制品滚塑件的研发、设计、制造、销售和服务的综合性高新技术企业。在户外装备方面为国内外热爱户外休闲生活的人们提供更高品质的感受而努力；在存储、分配和物流运输系统为全球十几个国家和地区的客户 提供革新技术方案以及更高品质、更加环保的产品和服务。

我们将可持续原则贯穿始终。引进国外先进的滚塑工艺和理念，斥资2000万元人民币，装配8条现代化国际先进水平的生产线，配套建立了2个专门的研发设计中心和检测中心，可年产各类规格滚塑模具、钢模铝模、滚塑件滚塑制品30万套；主要应用于农业、机械设备、军事、汽车、环保、户外、物流、食品及医疗等领域。

ROTA is a high-quality enterprise specializing in R&D,production,sale and services of insulated box,high strength cold chain logistics cooler box,rotomolded moulds and rotational molding products.In the storage,distribution and logistics transportation system, ROTA try to with innovative technical solutions and higher quality,more environmentally friendly products and services for more than a dozen countries and regions in the world of customers.

ROTA introduced foreign advanced concept of cold-chain logistics,has invested 20 million to use world-leading production processes and equipments and established independent R&D design center and inspection center. With strict quality control standards,our company can produce 300, 000 sets of various specifications rotational moulds and rotomolded products every year. Mainly are used in Agriculture, Equipment, Military, Car, Environment, Logistic and Medical area.



01 **20 多年的滚塑工艺经验**
Over 20 years experience in rotomolding industry

02 **8位设计师和16位工艺工程师**
8pcs professional designer and 16 engineers

03 **3000多套模具设计和制造经验**
Over 3000 sets molds design and production

04 **8套名牌方大滚塑机**
8 sets of famous brand Fangda Rotomolding Machine

05 **30000000套滚塑制品生产能力**
Over3000000 pcs annual peoduction capacity

06 **24小时1周7天全天候服务**
Service 24-hr service, 7 days a week.



罗塔保温周转箱渔业水产及食品加工

ROTA INSULATED CONTAINER

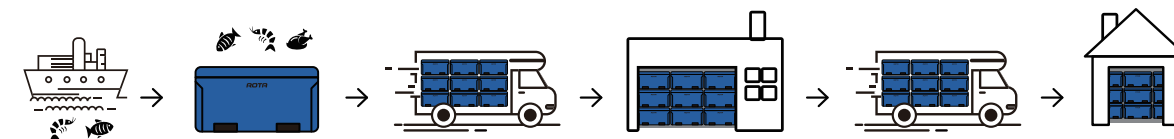
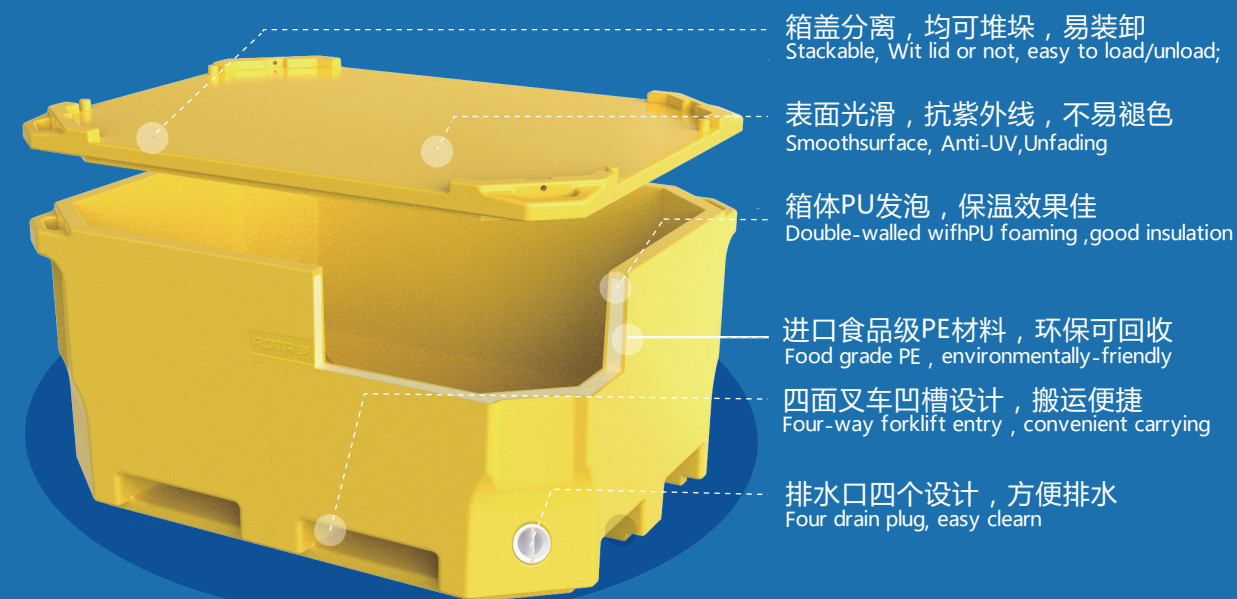
罗塔塑料保温箱由双层聚乙烯(PE)和高品质保温发泡聚氨酯(PU)制成，应用于各种行业，如渔业、食品加工、医疗药品、休闲和户外活动等。我们的塑料保温箱经过实际应用证明可以提高储运效率，持续保鲜，保障货物品质和提高商品价值，从而给您带来更高的利润。罗塔耐用高效保温周转箱常在船上及陆上用来储存和运输带冰块的鲜鱼，在码头上鱼类等海鲜的腌制以及在食品加工厂暂存和解冻生鲜食品。

适用于食品加工行业储存和周转冰块和液态冰、奶酪、酿酒、泡菜、宠物食品等的加工，鱼、肉等废弃物收集和鞣革等使用。尤其是箱底四个方向都有可供手动托盘车和叉车进入的凹槽，便于搬运和装卸。适当的冰冻后，高效保温发泡材料有助于保持产品持续冷冻5-6天。相比较市场上常见的注塑箱、吹塑箱和泡沫箱等，罗塔保温箱具有明显的优势如：超长保温时间，易清洗 杰出的抗损伤能力 可抵抗日常使用的刮、摔、碰撞等。

Our insulated container (also known as insulated bins/tubs) were made from double-walled Polyethylene (PE) shell and insulated with a choice of expanded Polyurethane (PU) for use in various industries such as Fisheries, Food Processing, Medicine, Leisure & Outdoor Activities and others. Our insulated plastic containers (also known as bins / tubs) are a proven way of increasing efficiency, keeping fresh, raising catch value & quality and potentially improving profits.

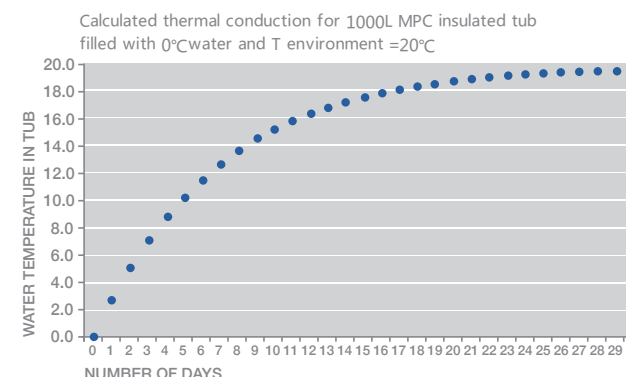
Rota durable and efficient thermal insulation turnover box is often used on ships and on land to store and transport fresh fish with ice, marinate fish and other seafood on the dock and store frozen in processing plants Fresh products.

It is suitable for storage and transportation of larger fish such as tuna and swordfish, and also suitable for the use of marinated shrimp and other products. It is suitable for the storage and turnover of ice cubes and liquid ice in the food processing industry, the processing of cheese, wine, pickles, pet food, etc., the collection of wastes such as fish and meat, and the use of tanning. In particular, the four directions of the bottom of the box have grooves for manual pallet trucks and forklifts to enter, which is convenient for handling and loading and unloading. After proper freezing, the high-efficiency insulation foam material helps to keep the product frozen for 5-6 days. Compared with the common injection boxes, blow molding boxes and foam boxes on the market, Rota incubators have obvious advantages such as long heat preservation time, easy to clean, outstanding damage resistance, and resistance to daily use of scratches, drops, collisions, etc. .



罗塔保温箱应用于渔业水产及食品加工行业

ROTA INSULATED FISH BINS & TURNOVER CONTAINER FOR FOOD PROCESSING



适用于生鲜、食品冷链，医疗器材，户外休闲等领域，或在运输及储运过程中对温度有要求的产品，例如：

Our insulated plastic containers/Logistic Box are the most popular & frequently used in the cold-chain logistic, medicine transports, outdoor activities and food processing (fish, shrimp & meat) sectors, for storage & keeping fresh during preparation.



活鲜鱼运输箱/暂养箱

INSULATED CONTAINER FOR LIVING AND AQUACULTURE

如果在运输过程中使用了不合适或劣质的容器，活鲜将面临危险和质量损失。我们结合保温周转箱多年在渔业水产行业中的应用，制造了适合活鲜运输和暂养的容器。

移动方便灵活的大容量1100升活鱼运输箱可堆垛节省空间。采用一体成型工艺，食品级PE材质，耐酸碱耐腐蚀，抗冲击，易清洗。高效保温 功能保证各种活鱼虾蟹的成活率和品质。适合中远途的箱货、卡车以及航空运输;适合放置于超市、酒店、海鲜市场的暂养使用。

Living fish will be damaged and quality loss in unsuitable or inferior containers during transportation. Basis on many years of experience in fishery industry, we have designed and manufactured the containers for living fish transportation and holding. The portable large-capacity 1100L container can be stacked to save space. Adopt the one-piece molding process, food-grade PE material, acid and alkali resistance, corrosion resistance, impact resistance, easy cleaning. High efficient heat preservation function ensures the survival rate and quality of all kinds of living fish, shrimp and crabs. And this insulated containers are suitable for medium and long distance transport for van , trucks and airline. It is suitable for temporary holding in supermarkets, hotels and seafood markets.

罗塔保温箱 --应用于冷链物流、医疗配送、户外运动以及商业促销

ROTA COOLER BOX
For Cold-chain logistic, Medicine Transport, Outdoor Sports and Commerical Promotion

	<div>ROTA-20L</div> <div>● ● ● ● ●</div> <div>外尺寸 (长×宽×高 mm) External Size (LxWxH)</div> <div>510×362×362</div> <div>内尺寸 (长×宽×高 mm) Internal Size (LxWxH)</div> <div>350×230×260</div> <div>重量 (公斤) Weight (kg)</div> <div>5.5</div> <div>容积 Volume (Litre)</div> <div>20.9</div>		<div>ROTA-100L</div> <div>● ● ● ● ●</div> <div>外尺寸 (长×宽×高 mm) External Size (LxWxH)</div> <div>870×521×506</div> <div>内尺寸 (长×宽×高 mm) Internal Size (LxWxH)</div> <div>688×365×385</div> <div>重量 (公斤) Weight (kg)</div> <div>50</div> <div>装箱数量 (20°/40°/40HC) Container Loading</div> <div>40/84/105</div>
	<div>ROTA-35L</div> <div>● ● ● ● ●</div> <div>外尺寸 (长×宽×高 mm) External Size (LxWxH)</div> <div>535×410×395</div> <div>内尺寸 (长×宽×高 mm) Internal Size (LxWxH)</div> <div>385×270×298</div> <div>重量 (公斤) Weight (kg)</div> <div>6.6</div> <div>容积 Volume (Litre)</div> <div>31</div>		<div>ROTA-300L</div> <div>● ● ● ● ●</div> <div>外尺寸 (长×宽×高 mm) External Size (LxWxH)</div> <div>1020×860×620</div> <div>内尺寸 (长×宽×高 mm) Internal Size (LxWxH)</div> <div>933×773×422</div> <div>重量 (公斤) Weight (kg)</div> <div>40</div> <div>装箱数量 (20°/40°/40HC) Container Loading</div> <div>48/84/112</div>
	<div>ROTA-45L</div> <div>● ● ● ● ●</div> <div>外尺寸 (长×宽×高 mm) External Size (LxWxH)</div> <div>645×410×395</div> <div>内尺寸 (长×宽×高 mm) Internal Size (LxWxH)</div> <div>495×270×298</div> <div>重量 (公斤) Weight (kg)</div> <div>8.1</div> <div>容积 Volume (Litre)</div> <div>39.8</div>		<div>ROTA-450L</div> <div>● ● ● ● ●</div> <div>外尺寸 (长×宽×高 mm) External Size (LxWxH)</div> <div>1220×1020×620</div> <div>内尺寸 (长×宽×高 mm) Internal Size (LxWxH)</div> <div>1133×933×422</div> <div>重量 (公斤) Weight (kg)</div> <div>50</div> <div>装箱数量 (20°/40°/40HC) Container Loading</div> <div>40/84/105</div>
	<div>ROTA-50L</div> <div>● ● ● ● ●</div> <div>外尺寸 (长×宽×高 mm) External Size (LxWxH)</div> <div>710×370×390</div> <div>内尺寸 (长×宽×高 mm) Internal Size (LxWxH)</div> <div>610×255×270</div> <div>重量 (公斤) Weight (kg)</div> <div>12.2</div> <div>容积 Volume (Litre)</div> <div>42</div>		<div>ROTA-640L</div> <div>● ● ● ● ●</div> <div>外尺寸 (长×宽×高 mm) External Size (LxWxH)</div> <div>1220×1020×790</div> <div>内尺寸 (长×宽×高 mm) Internal Size (LxWxH)</div> <div>1124×924×592</div> <div>重量 (公斤) Weight (kg)</div> <div>60</div> <div>装箱数量 (20°/40°/40HC) Container Loading</div> <div>40/84/105</div>
	<div>ROTA-65L</div> <div>● ● ● ● ●</div> <div>外尺寸 (长×宽×高 mm) External Size (LxWxH)</div> <div>762×465×415</div> <div>内尺寸 (长×宽×高 mm) Internal Size (LxWxH)</div> <div>614×325×320</div> <div>重量 (公斤) Weight (kg)</div> <div>11.2</div> <div>容积 Volume (Litre)</div> <div>63.8</div>		<div>ROTA-1000L</div> <div>● ● ● ● ●</div> <div>外尺寸 (长×宽×高 mm) External Size (LxWxH)</div> <div>1600×1160×850</div> <div>内尺寸 (长×宽×高 mm) Internal Size (LxWxH)</div> <div>1484×1044×640</div> <div>重量 (公斤) Weight (kg)</div> <div>90</div> <div>装箱数量 (20°/40°/40HC) Container Loading</div> <div>20/42/56</div>
	<div>ROTA-70L</div> <div>● ● ● ● ●</div> <div>外尺寸 (长×宽×高 mm) External Size (LxWxH)</div> <div>850×450×390</div> <div>内尺寸 (长×宽×高 mm) Internal Size (LxWxH)</div> <div>750×330×270</div> <div>重量 (公斤) Weight (kg)</div> <div>15.2</div> <div>容积 Volume (Litre)</div> <div>66.8</div>		<div>ROTA-1000H</div> <div>● ● ● ● ●</div> <div>外尺寸 (长×宽×高 mm) External Size (LxWxH)</div> <div>1600×1160×850</div> <div>内尺寸 (长×宽×高 mm) Internal Size (LxWxH)</div> <div>1484×1044×640</div> <div>重量 (公斤) Weight (kg)</div> <div>90</div> <div>装箱数量 (20°/40°/40HC) Container Loading</div> <div>20/42/56</div>

除了上述规格产品外，我们还提供根据您的需要而设计开发相应的产品。颜色和尺寸都可定制，欢迎联系。

In addition to the products above, we are able to offer design assistance in developing products for custom use. Color and Size both are can be customized, welcome to contact.



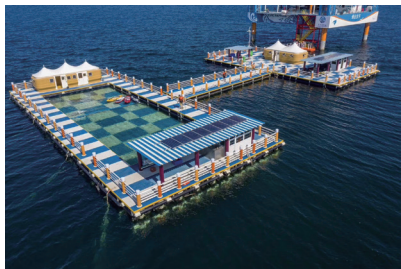
罗塔水上装备 ROTA MARINE EQUIPMENTS

依托多年的滚塑浮体制造经验，罗塔开始不断创新设计新型水上平台装备，组合式，模块化水上浮动平台，适合游艇码头，休闲平台，网箱养殖等等。随后不断开发相关的塑料装备如移动厕所，全塑保温房，管道浮体，休闲船，工作艇及其码头浮体等。

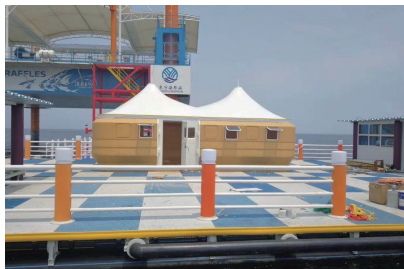
Based on rich experience in rotational molding floating manufacturing, ROTA development and designed many new equipment and products with combined type and modularity platform which is very suitable for marina, leisure platform, cage culture and son on. Also innovated of relevant plastic equipment such as mobile toilets, plastic insulated house, pipeline floating body, leisure boat, buoy, work boat and dock...etc.

水上加工厂
可根据您的需求设计智造适合水产品捕捞加工车间。
Offshore Processing Plant--Can be designed according to your needs for aquatic products fishing and processing workshop.

详细技术参数请联系0535-6750559



休闲平台 Rotomold Platform



游艇码头 Yacht Dock



塑料船艇 Boat



全塑保温房 Plastic Insulated House



移动厕所 Mobile toilet



海上垃圾箱 Dustbin

塑料制品定制加工

OEM & ODM
PLASTIC PRODUCTS AND PARTS

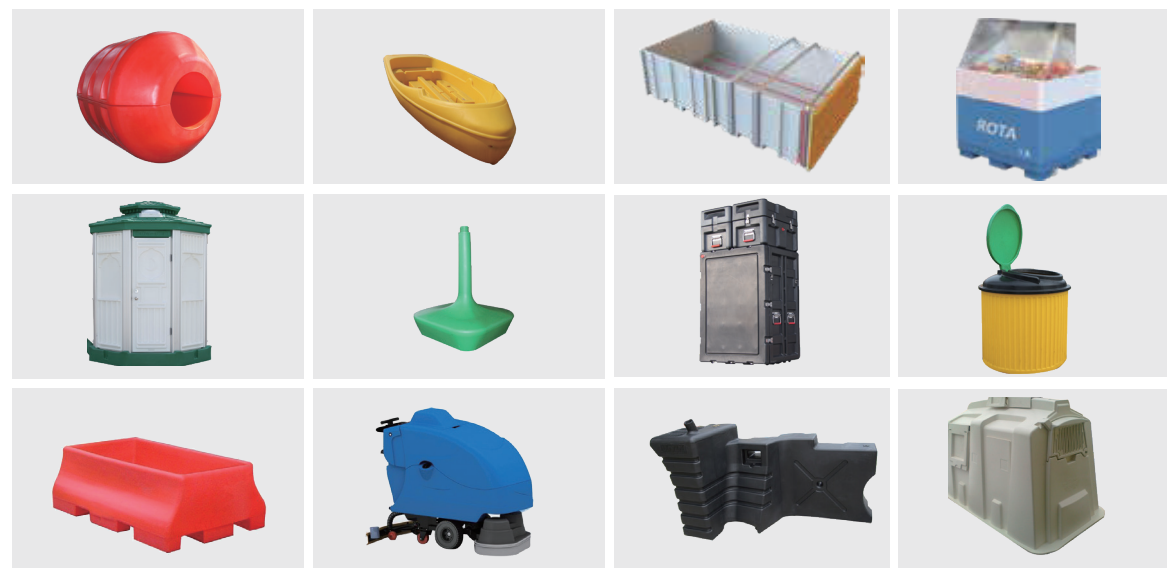
罗塔滚塑科技 重视您的理念 ,创造卓越产品！ ROTA Rotomold Plasticech We Take Your Ideas & Bring Them To Life

ROTA塑料提供多种颜色，目前没有使用的任何颜色都可以与您的规格相匹配。ROTA塑料提供了一种产品的图形。与乙烯基图形相比，模内图形的好处是耐久性。成型的图形熔融成塑料，使产品的一部分不像标签那样容易剥落。

与吹塑或注塑模具相比，滚塑成型的优点是加工成本低。常见的有各种塑料容器、水箱、景观美化等。滚塑成型技术将金属制品转化为塑料制品正变得越来越流行。塑料和金属相结合的好处是化学性和耐腐蚀性，也给了你一多种选择的机会，无需焊接即可用螺栓或铆接金属部件一起得到一个更复杂的形状。塑料抛光，表面更光洁。而且塑料零件既经济又耐用。

ROTA plastics are available in a variety of colors, and any colors not currently used can match your specifications. ROTA Plastic provides a product graphic. Compared with vinyl graphics, the advantage of in-mold graphics is durability. The formed graphics are melted into plastic, so that part of the product does not peel off as easily as the label.

Compared with blow molding or injection molds, rotational molding has the advantage of low processing costs. Common ones include various plastic containers, water tanks, and landscaping. Rotomolding technology to transform metal products into plastic products is becoming more and more popular. The advantage of combining plastic and metal is chemical and corrosion resistance. It also gives you a variety of options. You can use bolts or riveting metal parts to get a more complex shape together without welding. The plastic is polished and the surface is smoother. Moreover, plastic parts are economical and durable.



合作伙伴

PARTNER



